

## SEPTEMBER TOUR & DINNER

Thursday, 18-Sept-2003

### --- TRIP AGENDA ---

#### PROGRAM:

#### MARITIME in WISCONSIN

- Tour of the BURGER BOAT Co.
- Tour of the U.S.S. COBIA submarine
- Time inside the Wis Maritime Museum
- Section sponsored Motor Coach from Milwaukee's State Fair & Bayshore mall
- Dinner Topic: *Maritime Vessels*

Our first meeting of this season will be huge! These three tour segments will fill the evening with wonderful insights into the Wisconsin and Great Lakes maritime history. We are visiting facilities open to public tours, and have negotiated special group rates for the evening. The dinner cost includes everything... round trip motor coach transportation, all required tickets, and the dinner. The Milwaukee Section is subsidizing the remainder of the cost.

Thanks to all of our membership for their support, past and present. We hope that you enjoy this event and only regret we must limit attendance to the first 47 people who register by phone or on-line.

SAE SECTION NEWSLETTER  
MOVING TO EMAIL  
DISTRIBUTION!  
(see page 3)

Milw Bus stop#1: State Fair Park  
(location) (I-94 & 76<sup>th</sup> St)  
Departure time: 2:10pm ... *SHARP* please!

Milw Bus stop#2: Bayshore Park & Ride  
(location) (I-43 & Silver Spring)  
Departure time: 2:30pm ... *SHARP* please!

Tours: 4:00-6:30pm (approx.)  
Social / Dinner: 6:30-7:30pm (approx.)  
Location: Wisconsin Maritime Museum,  
River View Room

Presentation: 7:30-8:00pm (approx.)  
Milwaukee Return: 9:45pm (approx.)

#### DINNER MENU:

*No selection required*

--- Maui Chicken over rice ---

Also included: French onion soup, New England clam chowder, bread selection, spumoni ice cream, coffee, ice tea, and water will be provided.

#### Dinner Costs:

SAE Members / spouses:	\$20.00
Retirees:	\$18.00
Guests / Non-members:	\$25.00
Students w/ID:	\$10.00

#### Registration Info:

Motor coach/dinner reservations must be made by **NOON on Monday, September 15th**. Register with a Charge Card @ <http://milwaukee.sae.org>, via email: [milw-sae@wi.rr.com](mailto:milw-sae@wi.rr.com), or voice: 414-465-6722.

*"No-shows" with reservations will be billed.*

50-Year members entitled to 1 free dinner annually.

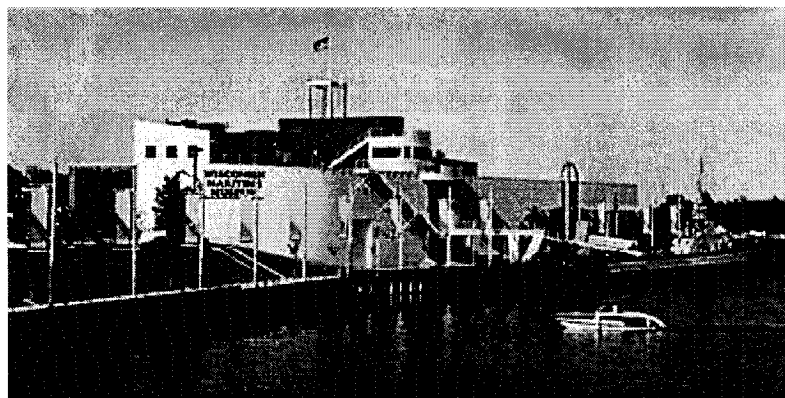
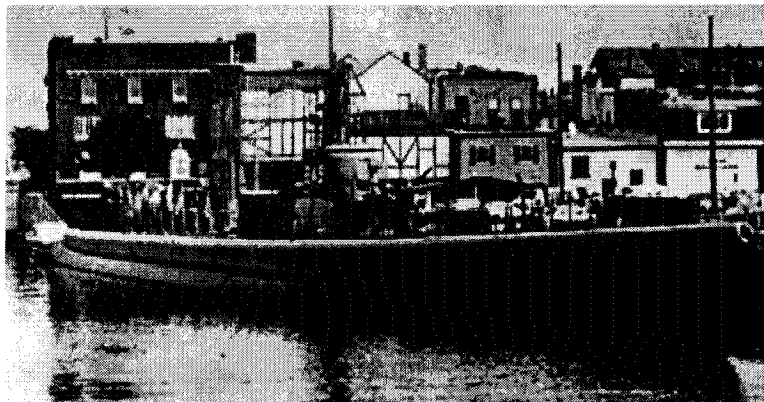
## Our Tours:

# BURGER

Burger Boat Company builds custom motor yachts that appeal to individuals who are unwilling to compromise on quality and perfection. Burgers are classic-styled, works-of-art with superior sea-keeping abilities. Exceptional secondary market values are retained. Founded in 1863, Burger designs and builds custom aluminum motor yachts ranging in size from 82'-165' (25m-50m). Vessels built today successfully blend tradition and modern technology as we strive to maintain the integrity of Burger's rich history and customize each vessel to satisfy the specific needs of each individual client.

---

**USS Cobia (SS-245)** was launched on November 28, 1943, by the Electric Boat Company of Groton, Connecticut. She is a fleet-type submarine (built to maintain speeds averaging 17 knots) of the Gato class. USS Cobia is the last thin-skin Gato type submarines to be built in the war. Soon after the completion of USS Cobia the Navy switched from the Gato design with its test depth of 300 feet to the newer improved Balao design with a test depth of 400 feet. USS Cobia is in excellent condition and is now maintained by the Manitowoc Maritime Museum.



Founded in 1970 as the Manitowoc Submarine Memorial Association, the **Wis Maritime Museum** has grown into one of the largest maritime museums in the Midwest. In addition to commemorating the maritime heritage of the Manitowoc-Two Rivers area and the submarines built here during World War II, the Wisconsin Maritime Museum is now a leader in preserving the maritime history of Wisconsin and the Great Lakes region.

**October 8 Meeting** tour: Exotic Cars–CAR SPORTS, Glendale

**November 13 Meeting** tour: Modine Manufacturing, Racine

**January 15 Meeting** tour: Delta Hawk Engine, Racine

## *Upcoming Events*

### Milwaukee Section 2002-2003 Governing Board

**CHAIRMAN:**

Dale Wiza  
Professional Engineering Placements, Inc.  
email: dalewiza@wi.rr.com  
Work: (414) 427-8080

**VICE CHAIR:**

Bill Schultz  
Retired  
email: Schulb23233@aol.com

**SECRETARY:**

Bernard Krauska

**TREASURER:**

Wayne Richter

**VICE CHAIR MEMBERSHIP:**

Joe Sagat

**VICE CHAIR MATH/SCIENCE:**

(open)

**VICE CHAIR STUDENT ACTIVITIES:**

John Lumkes

**VICE CHAIR PROGRAMS:**

Mark DeBattista  
Harley-Davidson Motor Co  
email: mark.d@email.sae.org

**COMPANY REPRESENTATIVE:**

Tim Fausel

**HISTORIAN:**

Don Berchem  
Retired  
email: dberchem@milwpc.com

**MEMBER at LARGE:**

Bill Riebe  
Retired  
Voice: (262) 246-3386  
Fax: (262) 246-7290

**Alt SECTION DELEGATE:**

(open)

### - Driving directions (in Milwaukee) to Bus -

The bus will pickup from 2 locations, Wisconsin State Fair Park and the Bayshore Mall park&ride lot. Registrants may use either boarding location for connection with our motor coach.

**State Fair** – the pickup location is just west of 76<sup>th</sup> Street, south of the I-94 expressway. From eastbound on I-94, exit at 84<sup>th</sup> Street. Go straight at the stop and go light, and travel along the north side of State Fair Park to 76<sup>th</sup> Street. Turn right, and enter at the first gate. Look for a LAMERS motor coach with an SAE sign in a window by the front door.

**Bayshore Mall** – the lot is directly east of I-43, between the freeway and Bayshore Mall. This location is a little north of Silver Spring Drive. Exiting the I-43 expressway at Silver Spring is likely the most convenient.

For the latest information visit the SAE web sites:

<http://milwaukee.sae.org> for the Milwaukee Section or,

<http://www.sae.org> for S.A.E. National.

### EMAIL NEWSLETTER DISTRIBUTION

To reduce the cost of sending out meeting notifications your Milwaukee Section newsletter will begin **email** distribution in November. Should you have no access to a computer or email, and therefore require us to continue mailing a hardcopy of the monthly newsletter to you (via US Postal Service) this can be arranged at your request. Please leave a complete message (name, phone number, address) to tell us you will need to maintain mail service as it exists now. Please leave your message outside of regular event registration times. Call your info in anytime from **SEPTEMBER 19<sup>th</sup> to OCTOBER 2<sup>nd</sup>** or between **OCTOBER 10<sup>th</sup> and NOVEMBER 5<sup>th</sup>**. Messages will be removed once daily.

We also ask everyone who has an email address, to please verify with SAE National that your email info is up-to-date. This can be done on the web at: **www.sae.org, MySAE/LogOn, Maintain Addresses, and Edit.**



# SAE Milwaukee Section



From Your Chairman:

Welcome to a SAE season of valuable and interesting events. This year promises some new exciting events - many already scheduled - and several new initiatives. One initiative is to better engage our younger and newer members. The newly expanded board includes new faces and has many ideas for adding value to membership and increasing participation in the Milwaukee SAE Section's many activities.

It's a pleasure to introduce our governing board: Bill Schultz is our Vice-Chair, Wayne Richter is taking over for Bill as Treasurer, Tim Fausel is in for Wayne as the Company Representative, Bernard Krauska is now the Secretary, Dr. John Lumkes is acting as the Student Activities Chair, Mark DeBattista will continue to direct and entertain us as Programs Chair and newsletter editor, Shawn Ray is leading our e-mail conversion, Mark Freisleben is our new Mini-BAJA representative, and Joe Sagat is replacing me as Vice-Chair of Membership/ Public Affairs. Continuing as Historian is Don Bercham, and Bill Riebe as Vice-Chair at Large.

From a recent change from SAE International, students will no longer receive the SAE magazines. We could really help our student members by recycling our SAE magazines to them. Dr. John Lumkes and I will collect them at monthly events; look for a drop-off box at sign-in.

Lastly, thank you for the opportunity to Chair this fine organization. Our success is, but not limited to, your satisfaction, growth, and involvement. Our governing board welcomes your input, concerns, and compliments. That's how we'll grow together. Please seek us out to share your own and company's interests in SAE.

Sincerely,  
Dale Wiza, SAE Chair

## 98' Raised Pilothouse Motor Yacht



**LADY AQUILA**

L/OA 98'00"  
 Beam 22'00"  
 Draft 5'00"  
 Fuel capacity 40,000 gallons  
 Fresh water capacity 1,200 gallons  
 Naval architecture Dan O'Rourke  
 Interior Designer Robert Corrado  
 Design/Builder Burger Design Team  
 Exterior Designer Dan O'Rourke  
 Builder Burger Design Team  
 Engines and model DeWitt Diesel 16V57TA156EC 1500hp @ 2400rpm  
 Launch Date April, 1997